



UNECE – United Nations Economic Commission for Europe  
UN/CEFACT – UN Centre for Trade Facilitation and e-Business

# e-CERT

Sanitary and Phyto Sanitary Certificate

13 October 2015

WTO

Frans van Diepen

Coordinator Agriculture



UNECE – United Nations Economic Commission for Europe  
UN/CEFACT – UN Centre for Trade Facilitation and e-Business

# Content

- UN/CEFACT introduction
- Position e-CERT in the supply chain
- Concept of e-CERT
- Limits
- Usage
- Benefits
- Developments



# What is UN/CEFACT

- UN/CEFACT = United Nations Centre for Trade Facilitation and Electronic Business
- Objectives
  - Simple, transparent and effective processes for global business
  - Efficient and automated exchange of information
- Outputs
  - Global Trade Facilitation and Electronic Business Recommendations and Standards
- Means
  - Public Private Sector Partnership – over 300 experts from government and business
  - Meet virtually every week plus two Forums per year



UNECE – United Nations Economic Commission for Europe  
UN/CEFACT – UN Centre for Trade Facilitation and e-Business

## UN/CEFACT Mission

- UN/CEFACT's mission is to improve the ability of business, trade and administrative organizations, from developed, developing and transitional economies, to exchange products and relevant services effectively.
- Its principal focus is on facilitating national and international transactions, through the simplification and harmonization of processes, procedures and information flows, and so contribute to the growth of global commerce



UNECE – United Nations Economic Commission for Europe  
UN/CEFACT – UN Centre for Trade Facilitation and e-Business

# UN/CEFACT Objective and product

- Facilitate e-commerce and e-trade
- In cooperation with other bodies such as WCO, FAO, IMO , CITES, OASIS, W3C, GS1
- Recommendations
- Semantics (Core Component Library)
- Syntax (UN/EDIFACT and XML schemas)



# Why e-CERT

## Private Sector

- Speed up border clearance
- Reduce transaction costs
- Reduce administrative burden
  - Single assignment
  - Reuse of data

## Government



- More efficient certification process
- Contributes to Risk based enforcement
- Reduced fraud (CODEX)
- Prerequisite to paperless



UNECE – United Nations Economic Commission for Europe  
UN/CEFACT – UN Centre for Trade Facilitation and e-Business

# e-Certification

- Certification data
- Transmitted electronically
- Secure
- Authentic
- Non Repudiative
- Directly between Competent Authorities

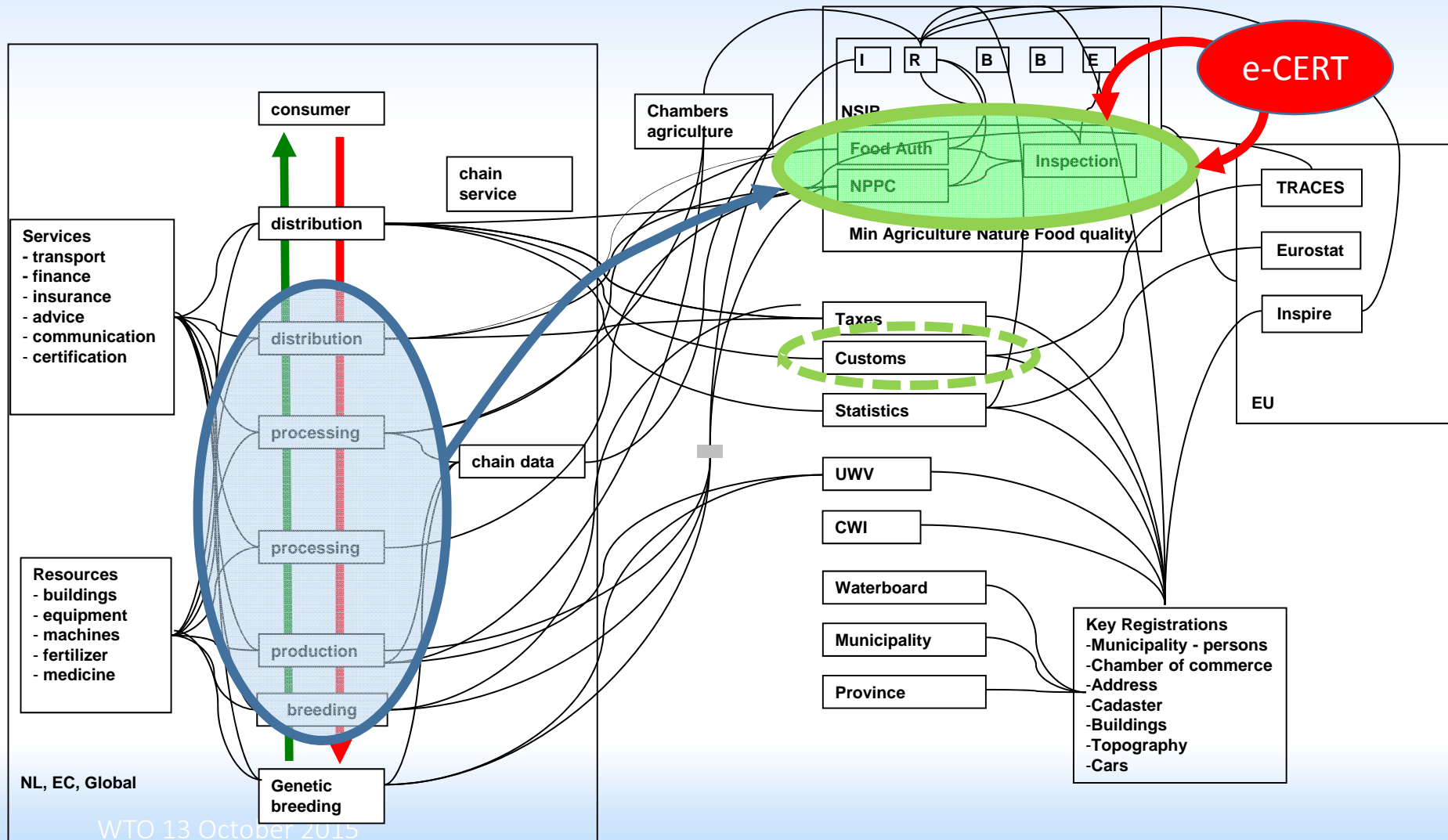
1 Name and address of exporter		2 <b>PHYTOSANITARY CERTIFICATE</b> No. EC / NL /  ORIGINAL	
3 Declared name and address of consignee		4 <b>Plant Protection Organization of the Netherlands</b> Protection Organization(s) of	
5 Declared means of conveyance		6  <b>agriculture, nature and food quality</b>	
7 Declared point of entry		8 Distinguishing marks, number and description of packages; name of product (botanical name of plants)	
9 Quantity declared		10 This is to certify that the plants, plant products or other regulated articles described herein: — have been inspected and/or tested according to appropriate official procedures, and — are considered to be free from the quarantine pests specified by the importing contracting party, and — are considered to conform with the current phytosanitary requirements of the importing contracting party, including those for regulated non-quarantine pests.	
11 Additional declaration		12 Place of issue	
13 Disinfestation and/or disinfection treatment		Date: Name of authorized officer:                      Stamp of Organization:	
14 Chemical (active ingredient)	15 Duration and temperature		
16 Concentration	17 Date		
18 Additional information			

<Name>Phytosanitary certificate<Name>  
 <ID>EC/NL/04026805<ID>  
 <IssueDateTime>2011-07-20<IssueDate Time>  
 <IssuerSPSparty>  
 <Name>Plant Protection Organization  
 of the Netherlands<Name>  
 <RecipientSPSparty>  
 <Name>APHIS<Name>  
 <Description>Cut flowers<Description>  
 <ScientificName>Rosa spp.<ScientificName>





# e-CERT position in the supply chain





# Concept of e-CERT

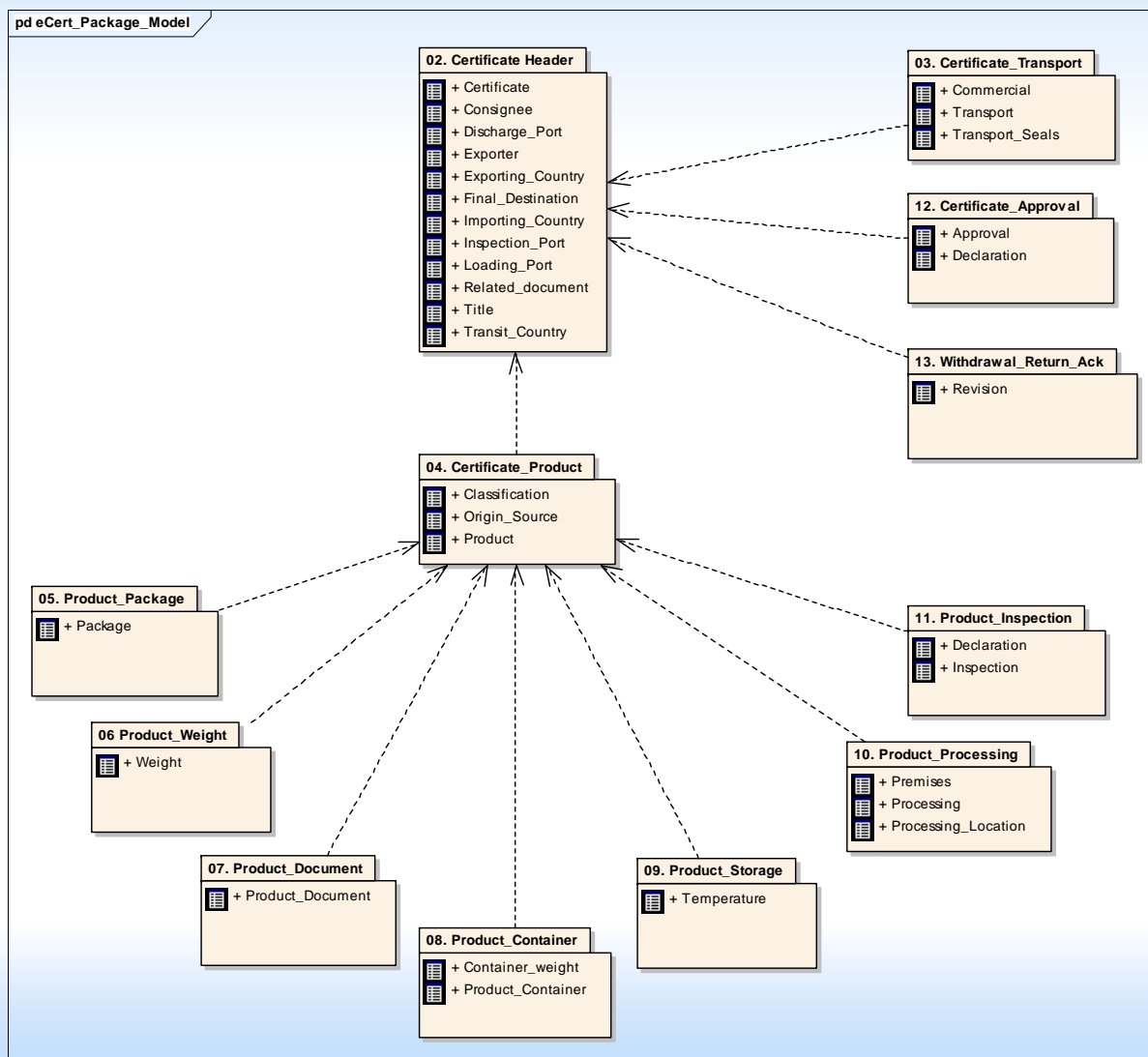
G2G Certificate.  
Sanitaire certificate for  
animals, animal products  
plants and plant products.

OIE and IPPC regulations.

- Consignment
- Party
- Product
- Transport
- Storage
- Health status

Certificate based on  
information extracted out of  
the complete production chain

WTO 13 October 2015

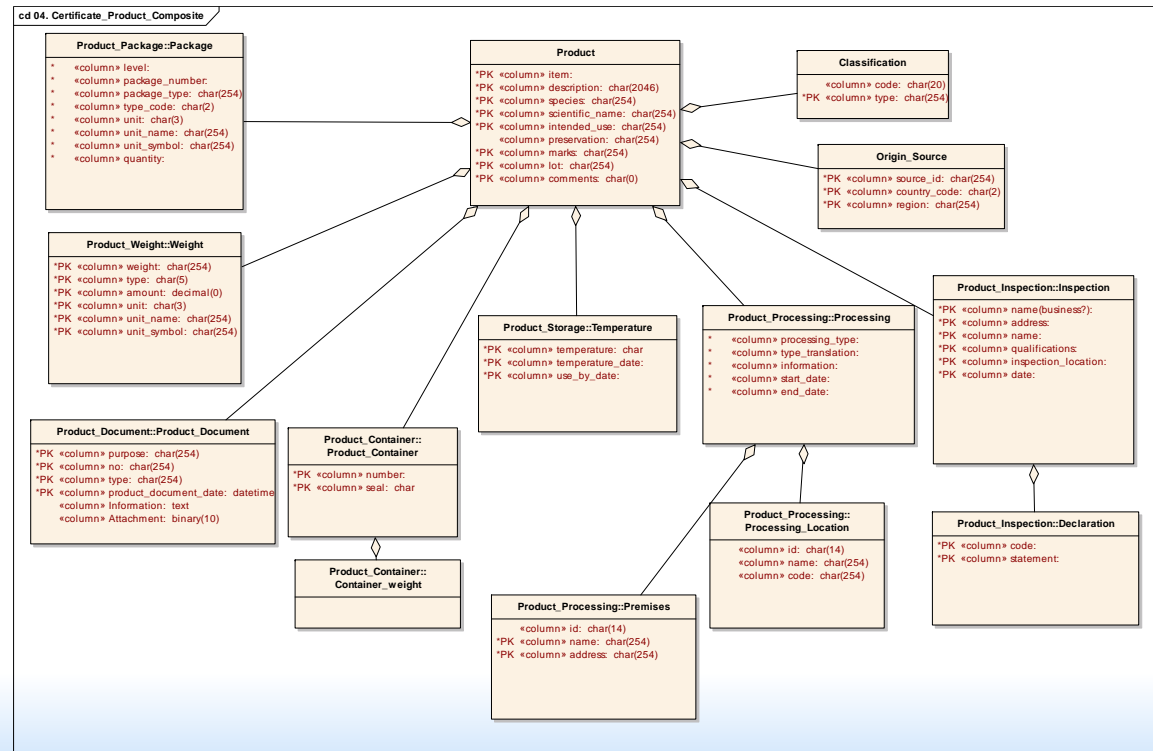




# Concept of e-CERT

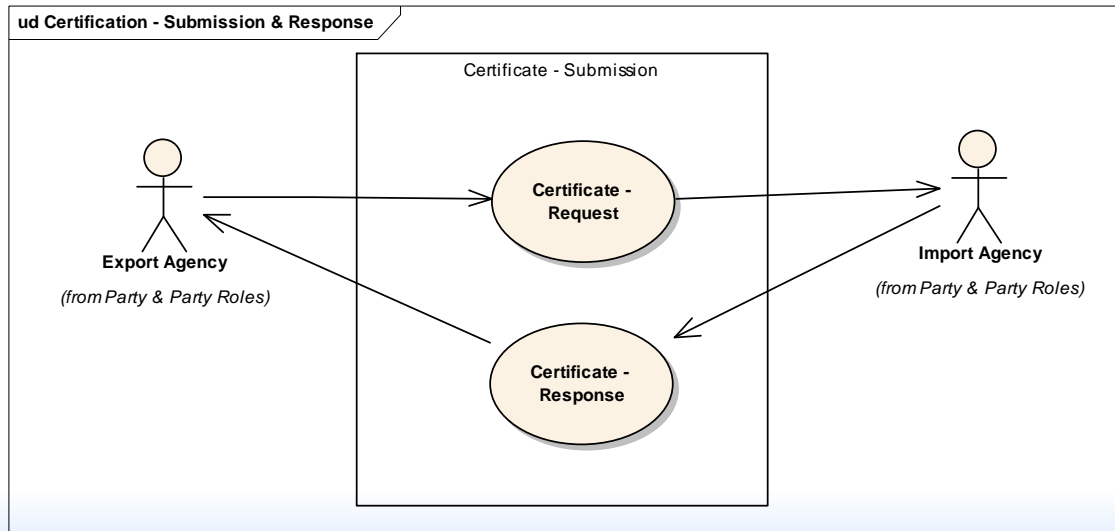
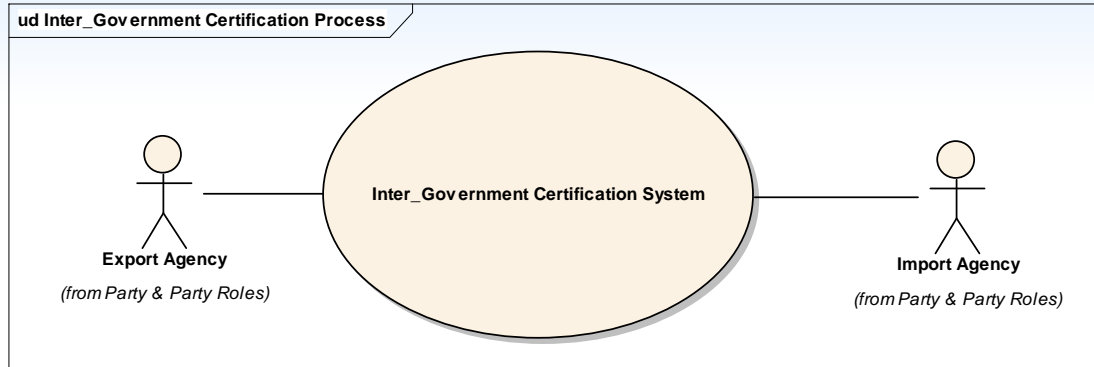
## Certificate Product

- Packaging
- Weight
- Storage: Including temperature
- Container: Identification, Seal, Weight
- Processing: Location, Premises
- Inspection: Inspection Completed By, Declarations
- Document





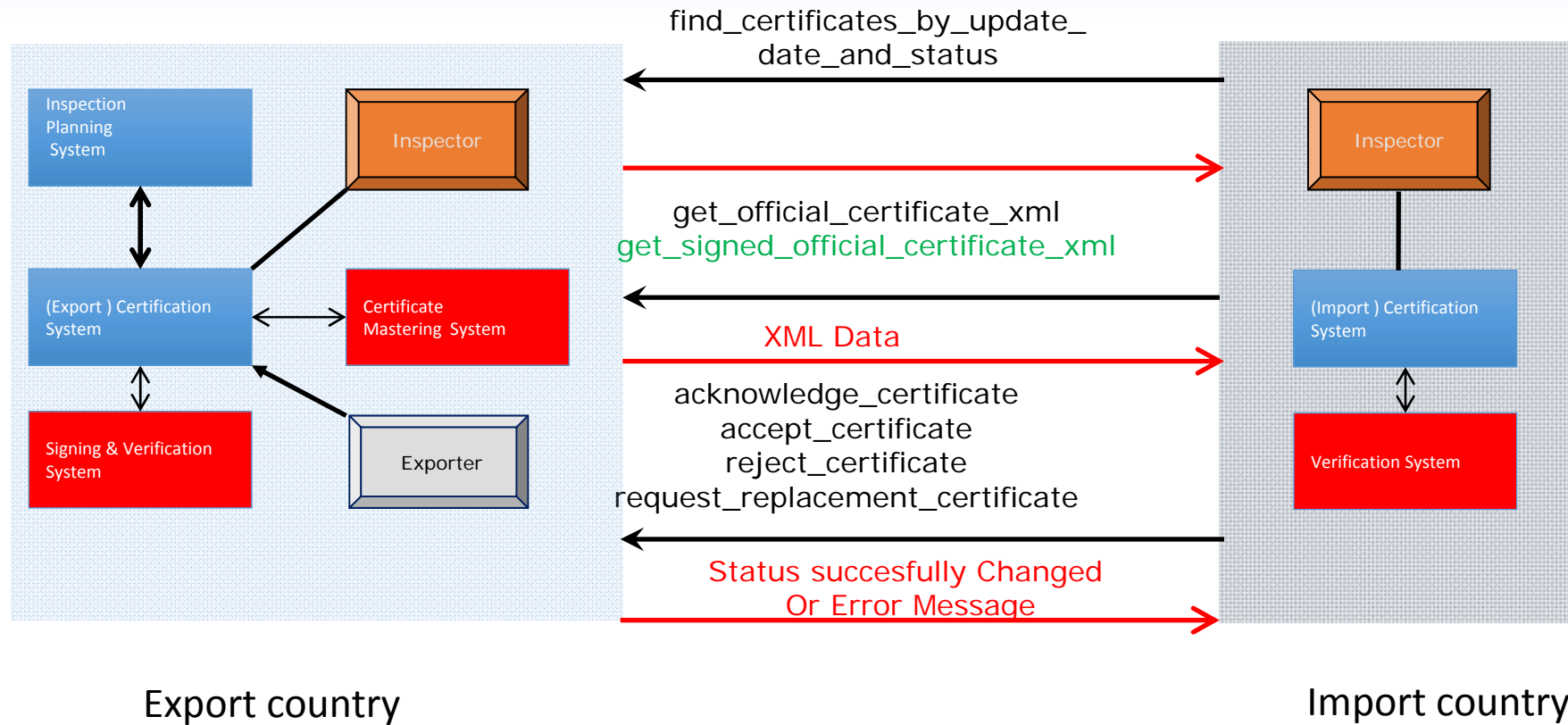
# Party and process



- Raise
- Approve
- Request replacement
- ReSummit
- Replace
- Reject
- Cancel
- Acknowledge



# G2G communication





UNECE – United Nations Economic Commission for Europe  
UN/CEFACT – UN Centre for Trade Facilitation and e-Business

## e-CERT

- Set of standard business information entities
- Set of messages
- Additional process agreements
  
- Exchange G2G  
between
  - national food and/or plant protection authority
  - export country - import country



UNECE – United Nations Economic Commission for Europe  
UN/CEFACT – UN Centre for Trade Facilitation and e-Business

# e-CERT users (Bilateral)

## Implemented

- China
- Australia
- Chile
- Kenya
- South Korea
- USA
- New Zealand
- Canada
- European Union
- Japan
- Malaysia
- Russia
- Jordan

## Implementation stage

- Colombia
- Hong Kong
- Indonesia
- Mexico
- Peru
- Turkey
- Thailand
- Ecuador
- Phillippines

October 2015



## e-Cert (Multilateral)

- IPPC                      ePhyto
- OIE                      encouraging e-Certification as  
  standard                      for Veterinary Certification
- CODEX                      e-Certification recognised but need  
  further implementation
- UNCTAD                      enabling Developing Countries  
  to use e-CERT
- UNCEFACT                      using the Trade library at  
  implementation at IPPC , OIE and  
  CODEX





UNECE – United Nations Economic Commission for Europe  
UN/CEFACT – UN Centre for Trade Facilitation and e-Business

## e-CERT aligned with

- WCO data model and the UN/TDED
- Transport / shipping information (consignments)
- Coding of product and process



UNECE – United Nations Economic Commission for Europe  
UN/CEFACT – UN Centre for Trade Facilitation and e-Business

## Advantages e-CERT

- Up to date certificate
- Interaction between exporting / importing country  
accept / reject / update
- Fraud and counterfeit prevention
- Support Single Window approach



## Advantages e-CERT

- Improved process
- risk based inspection,
- scheduling, time to handle,
- reuse of information,
- data integration,
- chain integration:  
B2B, B2G, G2G, G2B, B2B



UNECE – United Nations Economic Commission for Europe  
UN/CEFACT – UN Centre for Trade Facilitation and e-Business

## e-Cert not include

- The export process chain
- The import process chain
  
- e-Signature
- e-Archiving and reproducing
  
- Collaboration agreement between the countries



# documentation

- Business Requirement Specification
- Requirement Specification Mapping



- XML schema
  - SPS Certificate
  - SPS Acknowledgement
- Implementation guideline
- Handbook (under construction )

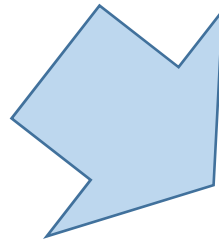


- National implementation



# Developments in agro food

- Sustainability
- Food safety
- Market access



- Traceability
- Transparency



# Traceability and Transparency

- Party
    - Identification
    - Information
  - Product
    - Identification
    - Description
    - Process
    - Location
    - Date/time
- Who
  - What
  - Why
  - Where
  - When



## Developments in the agri food domain

- Standard messages :
  - e-CERT phyto and veterinarian sanitary certificate G2G
  - e-Daplos, e-CROP, agro product information message B2B
  - Animal identification and e-Animal passport G2G
  - Dispatch advice (batch number, identification) B2B
  - e-LAB laboratory observations report B2B, B2G, G2G
  - FLUX Fishing monitoring and reporting G2G
  - Track and Trace Animals (and Plant and Product) B2B, B2G, G2G
- Coding
  - Product (EPC, Codex Alimentarius)
  - Location and Party identification (GLN, Blue number, )
- Certification
  - Authority, NGO, Private business (GlobalGap, Organic , Sustainable, CITES, Standard Maps ITC ... )
- Integration of domains
  - e-Invoicing (in fish, cutflowers, fresh fruits and vegetables)
  - Transport and location (GN codes – GS1)
  - CITES e-permits
  - WCO datamodel III and IV
  - Production, Trade and Retail



# UN/CEFACT

SIMPLE, TRANSPARENT AND  
EFFECTIVE PROCESSES  
FOR GLOBAL BUSINESS

Frans van Diepen

[frans.vandiepen@rvo.nl](mailto:frans.vandiepen@rvo.nl)

+31 648 131 006