

# Implementation guideline e-CERTIFICATES

Frans van Diepen  
UN/CEFACT domain coordinator

STDF SPS Electronic Certification Advisory Committee  
December 2, 2020



# UNCEFACT Implementation guideline project

- under development
- SPS e-CERT
  - Plant and plant product
  - animal and animal products
- e-Quality
- eCITES

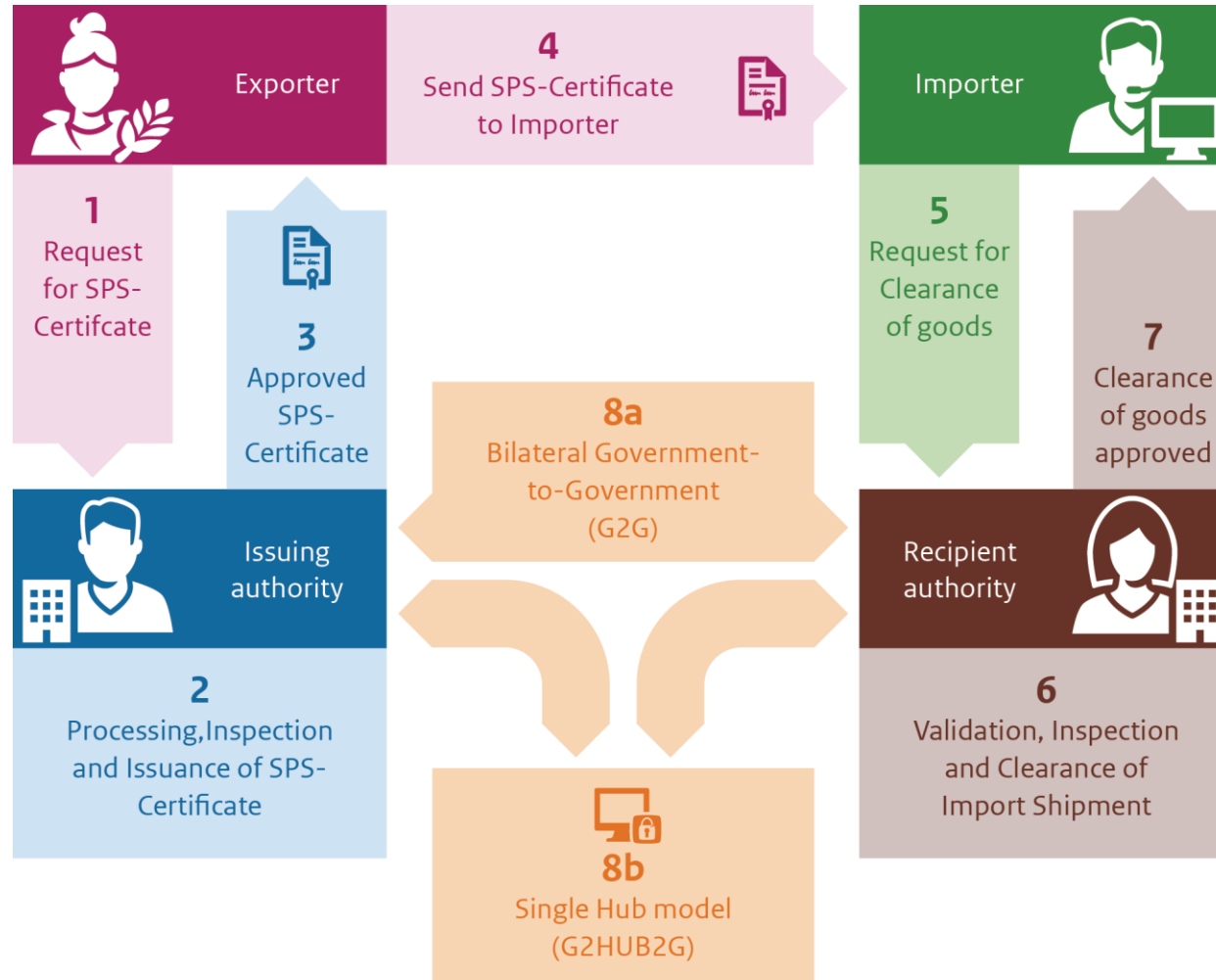
# One guideline for implementation of e-Certificates

- communication between partners: B2B, B2G and G2G
- several business processes
- different architecture
- no common e-Signature structures
  
- Based on UN/CEFACT CCL:  
naming and definition of information entities

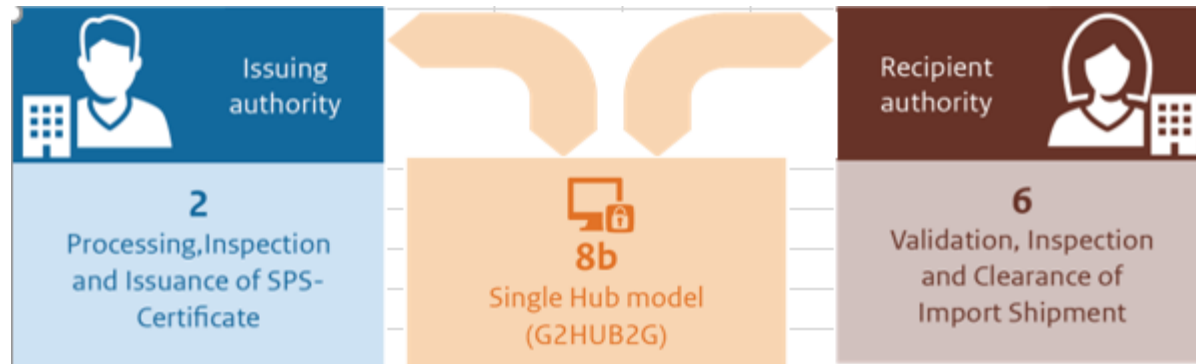
# architecture

	Hub	Point2Point	
		Push	Pull
SPS plant	+	+	+
SPS animal	-	+	+
e-Quality	-	+	+
eCITES	-	+	+

# SPS e-CERT Process



# SPS e-CERT Hub and P2P (G2G exchange)



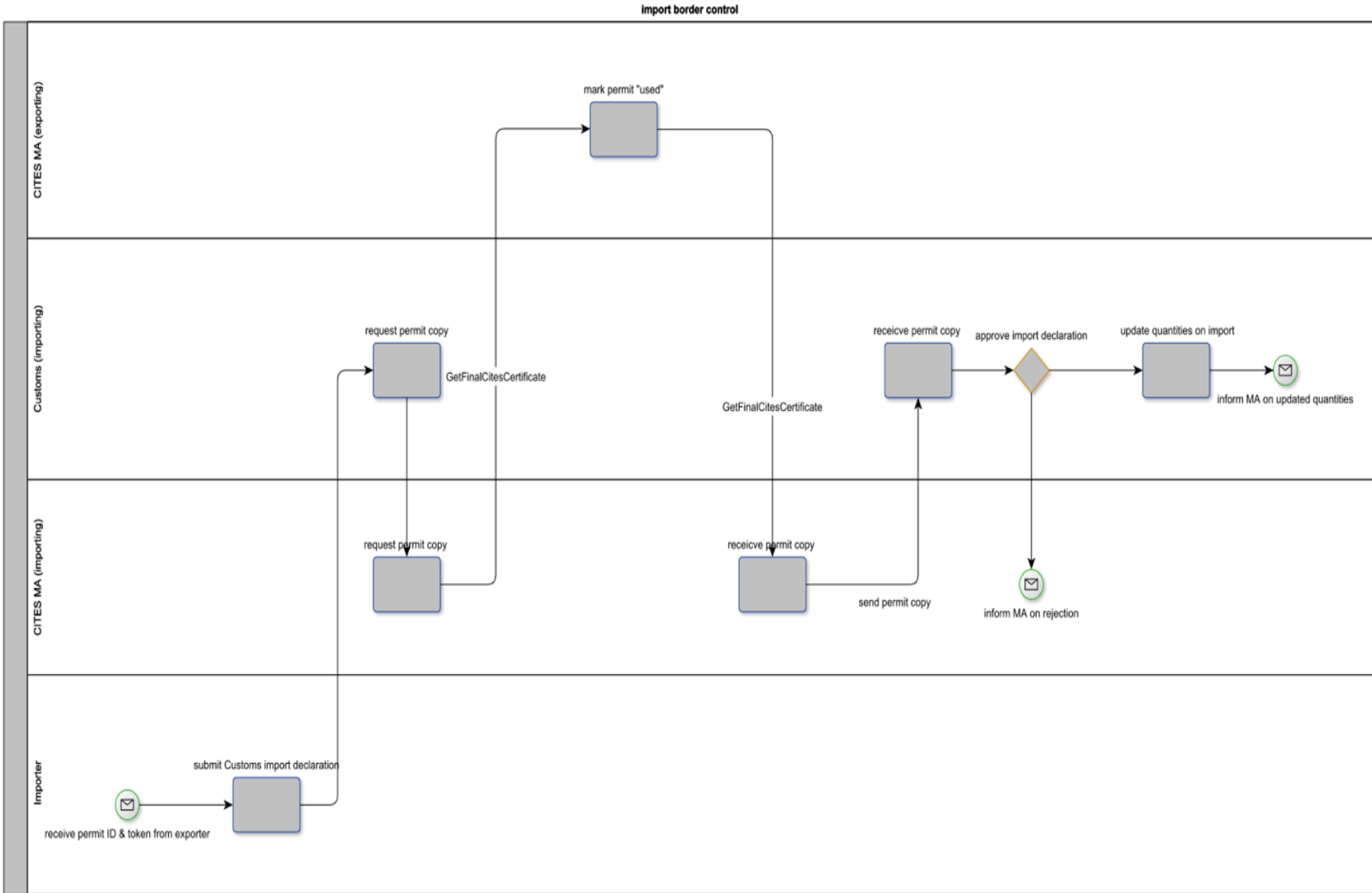


# eCITES webservice calls and WSDL



e GetFinalCitesCertificateRequest

GetFinalCitesCertificateRequestType	
e CertificateNumber	string
e TokenId	string
e IsoCountryCode	string



# Message collaboration, Choreography defined in the WSDL





# Service architecture

- Service – Client approach
- WSDL
- *API design*
- *P2P, Hub, Central Hub , Multi-Hubs*
- *e Signature*  
*(in the certificate, in the envelope , at message level )*

# Project status

- final version ready for review December 2020
- focus on SPS e-CERT (plant and animal) Central Hub and P2P implementation
- eCITES Guide drafted completed by UNECE&CITES; currently under review by Parties
- UNECE&ESCAP Task Force on eCITES exchange pilots
- no attention on eSignature issues.