



TRACES

Trade Control and Expert System

the path toward
sanitary electronic certificates
using qualified electronic seals and
signatures

OMC / STDF
Geneva 28 june 2016

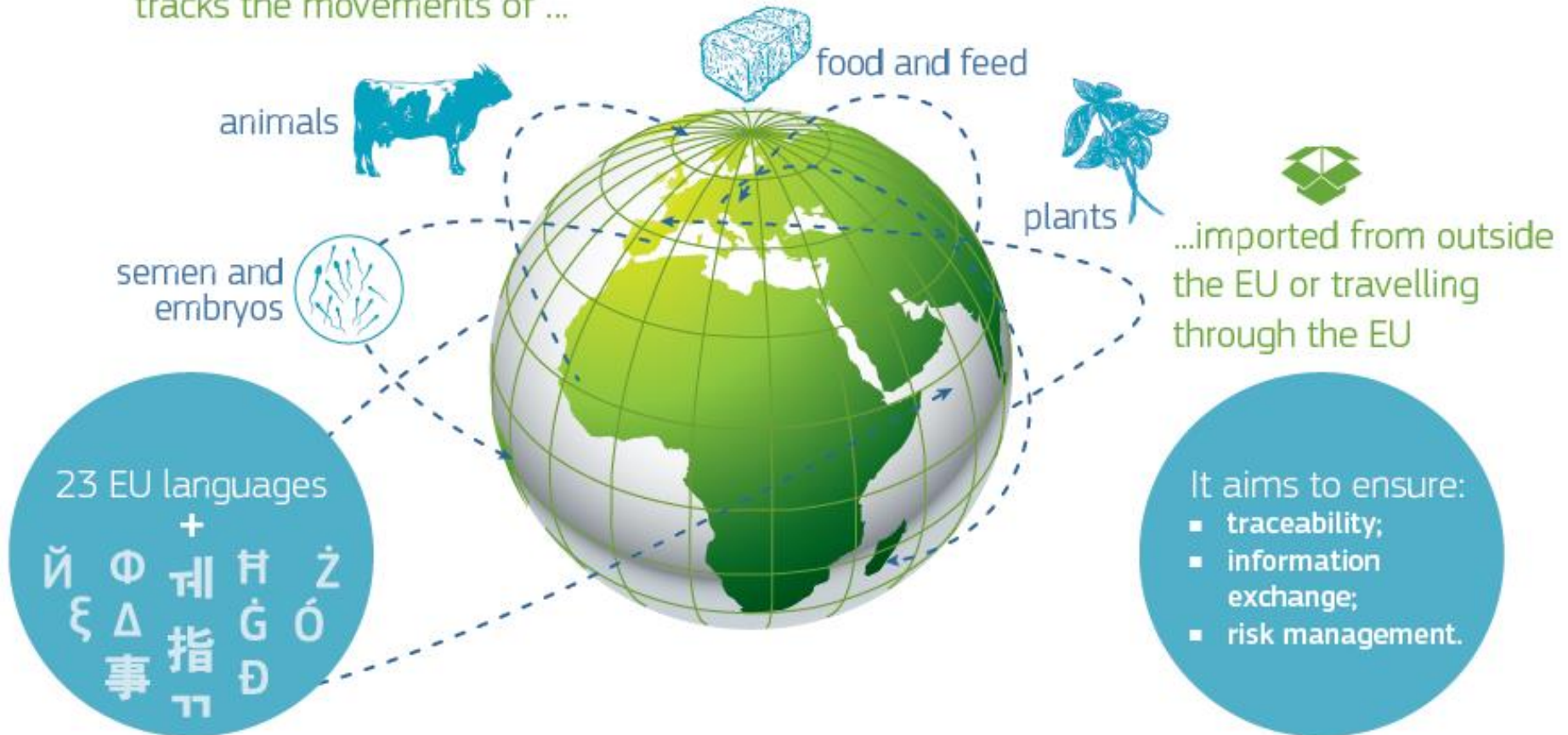
Dr. Didier CARTON
Didier.carton@ec.europa.eu



European
Commission

TRACES

tracks the movements of ...



e- government system

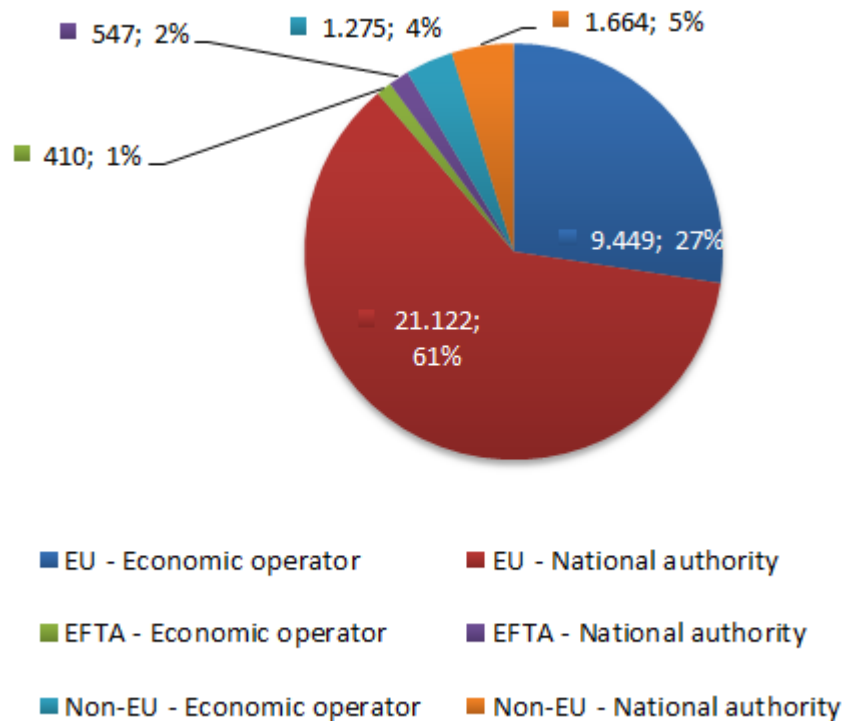
- Certification and customs single window
- Notification and control planning
 - Entry points, at destination, during transit
- Follow up of the decisions taken
 - Feedback of information
 - Help to the decision (reinforced checks)
- Crisis management
 - Trace back and forth the movements of the consignments



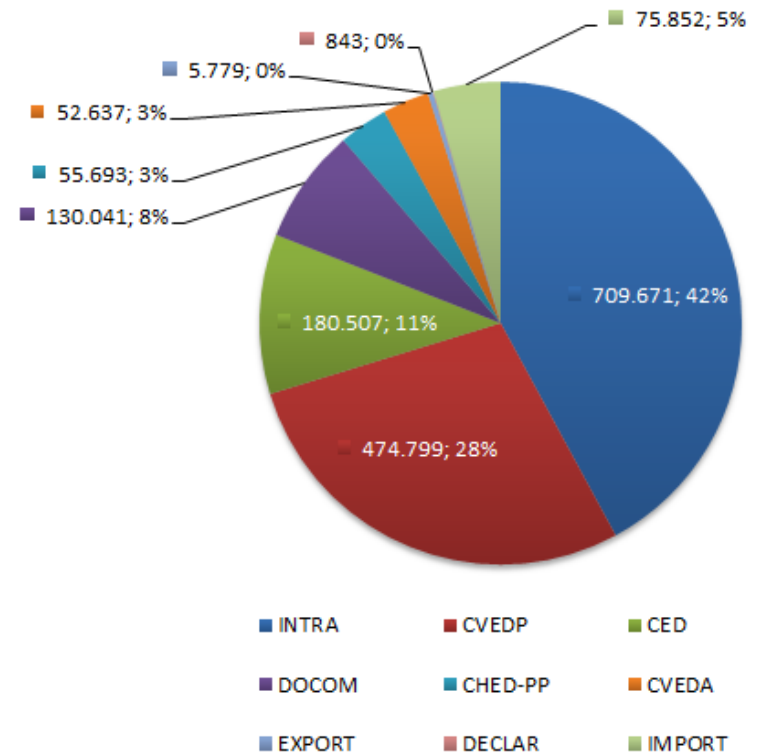
European
Commission

Participation in 2015

Users : 34.467



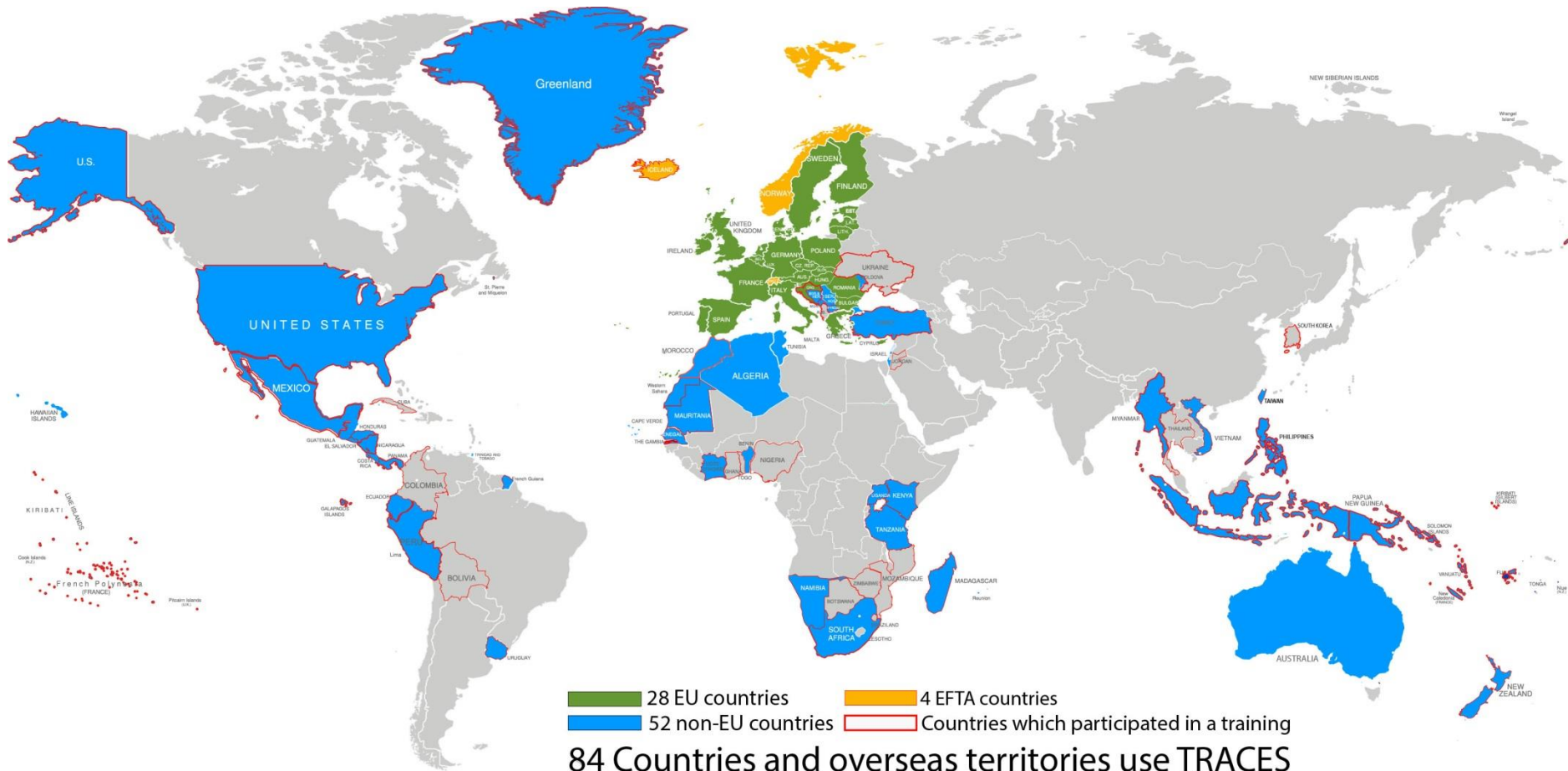
Certificates: 1.685.822





European
Commission

Participation in 2015



Participation in 2015

- Compulsory (since 01/01/2005)
 - EU and EFTA
- Voluntary basis
 - non EU-EFTA countries
 - Through the interface
 - 52 countries or P-TOM (38 in development)
 - Electronic exchanges between systems
 - New Zealand (2010)
 - USA (2012)
 - Australia (2016)



eIDAS: the new framework

- [Regulation \(EEU\) N° 910/2014](#) on electronic identification and trust services for electronic transactions in the internal market and repealing Directive 1999/93/CE (*entry into force: 01/07/2016*)
 - Defines the **norms** for the **electronic identification means** of natural and legal persons
 - Lays down the **rules for trust services**
 - Defines the services for simple, advanced, qualified **electronic signatures**, seals, time stamps ...



eIDAS: the new framework

- **uniformisation** of electronic signature approach within EU
- **simplification** of the electronic certificates use
- **Recognition** of the legal value of a digital document
- « An electronic document is considered as a proof as well as a handwritten document provided that the person who did it can be identified and that it was issued and stored under conditions that guarantee its integrity ».
- **Means of identity control** of the signing person through points of surveillance



European
Commission

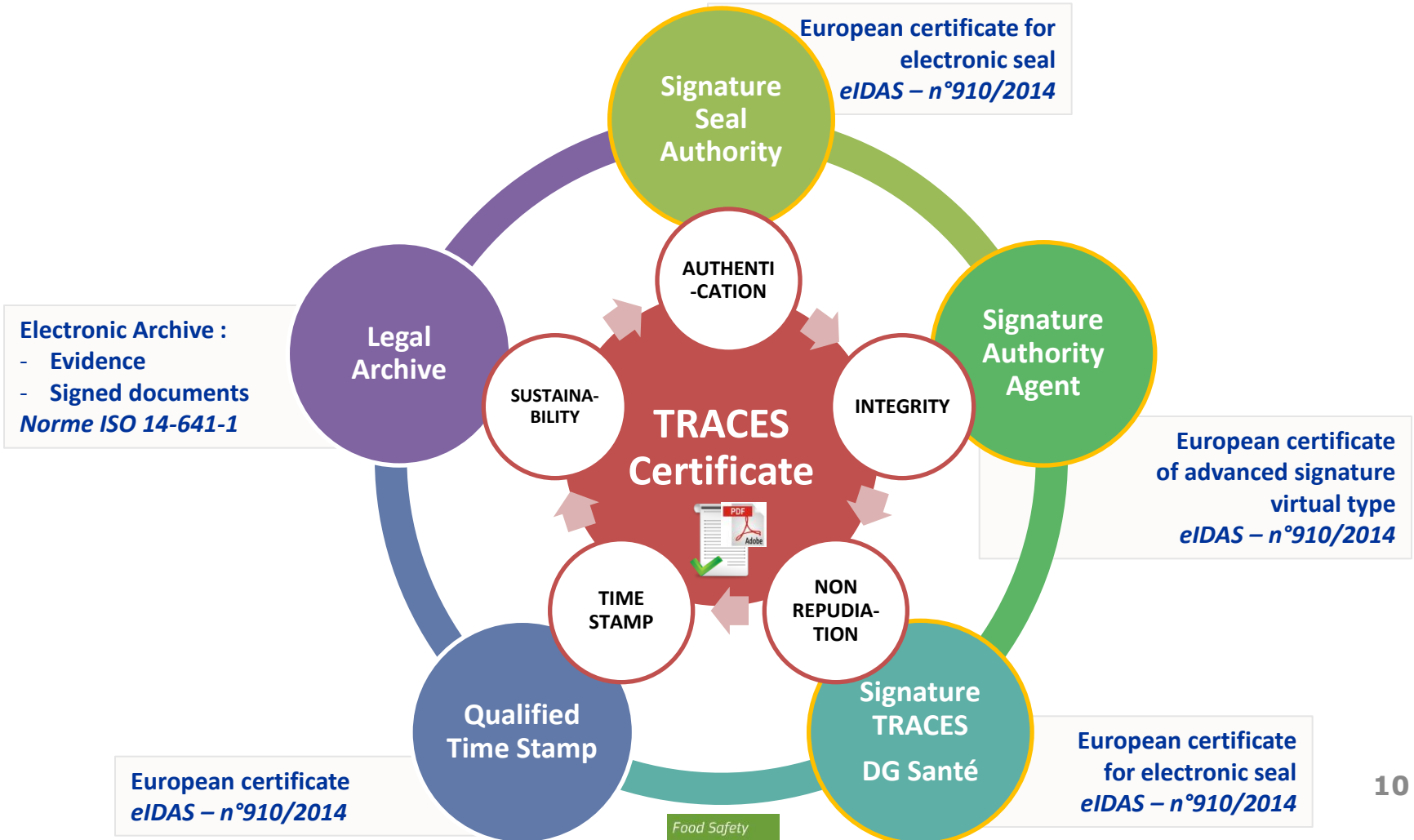
eIDAS: the 4 levels of signature

	Level 1 SIMPLE SIGNATURE	Level 2 ADVANCED SIGNATURE	Level 3 ADVANCED + SIGNATURE	Level 4 QUALIFIED SIGNATURE
ETSI NORM	Without registration ETSI 102 023	ETSI 102 042	ETSI 101 456	ETSI 101 456 + SSCD
IDENTITY	No certificate or certificate on the fly	Simple european certificate Virtual smart card (authentication code) On-line identity control	Qualified european certificate Virtual smart card (authentication code) Face to face identity control	Qualified european certificate Physical means (USB key, SSCD smartcard) Face to face identity control
INTEGRITY	Qualified timestamp	Qualified timestamp	Qualified timestamp	Qualified timestamp
TRACABILITY	Electronic evidence Login + password	Electronic evidence Login + password + identity control	Electronic evidence Login + password + identity control	Electronic evidence Login + password + identity control
LEGAL VALUE	≤ 25%	≤ 50 %	≤ 75%	100% ⁹



European Commission

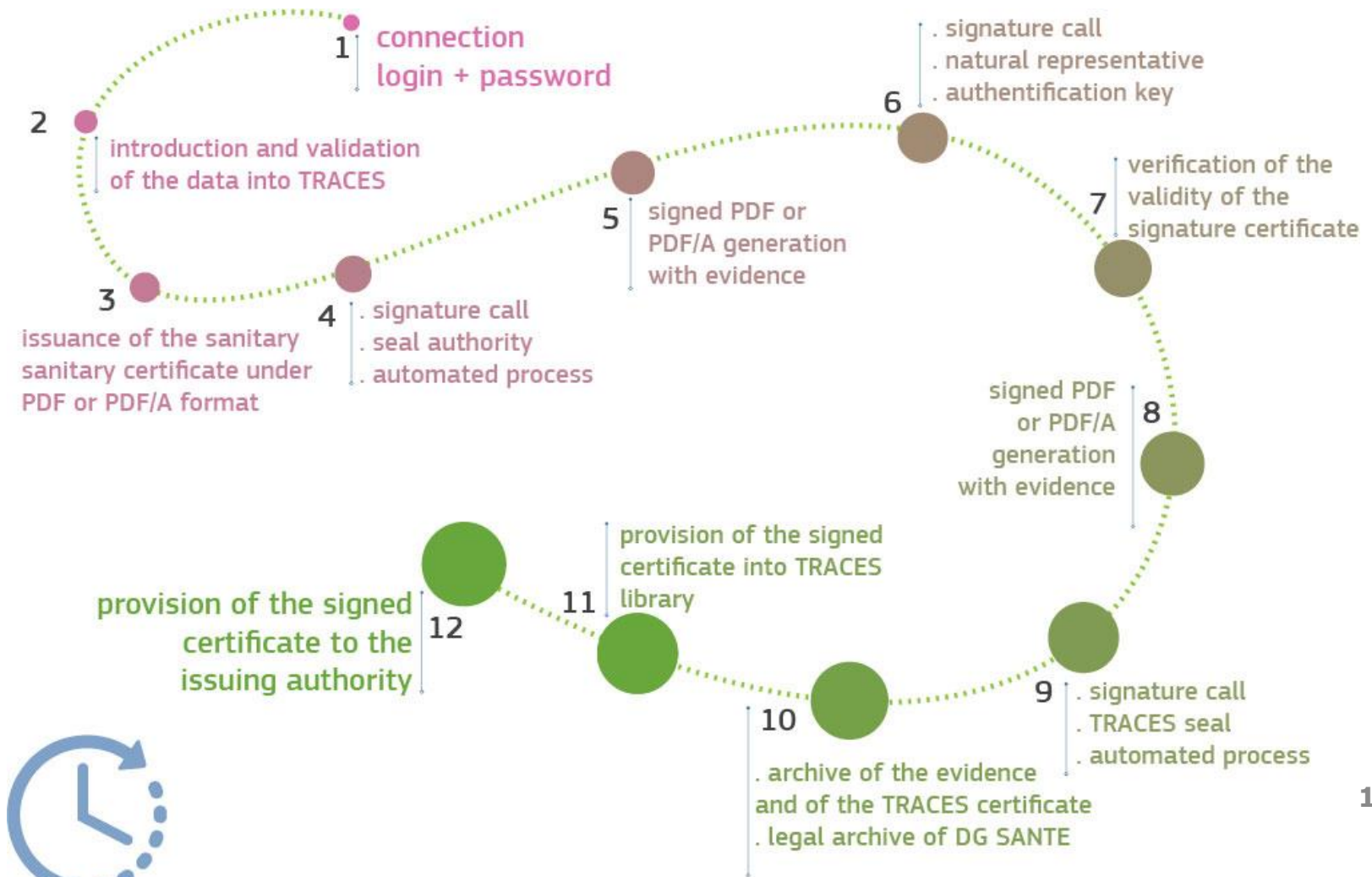
Sanitary certificate and key elements of legal evidence





European
Commission

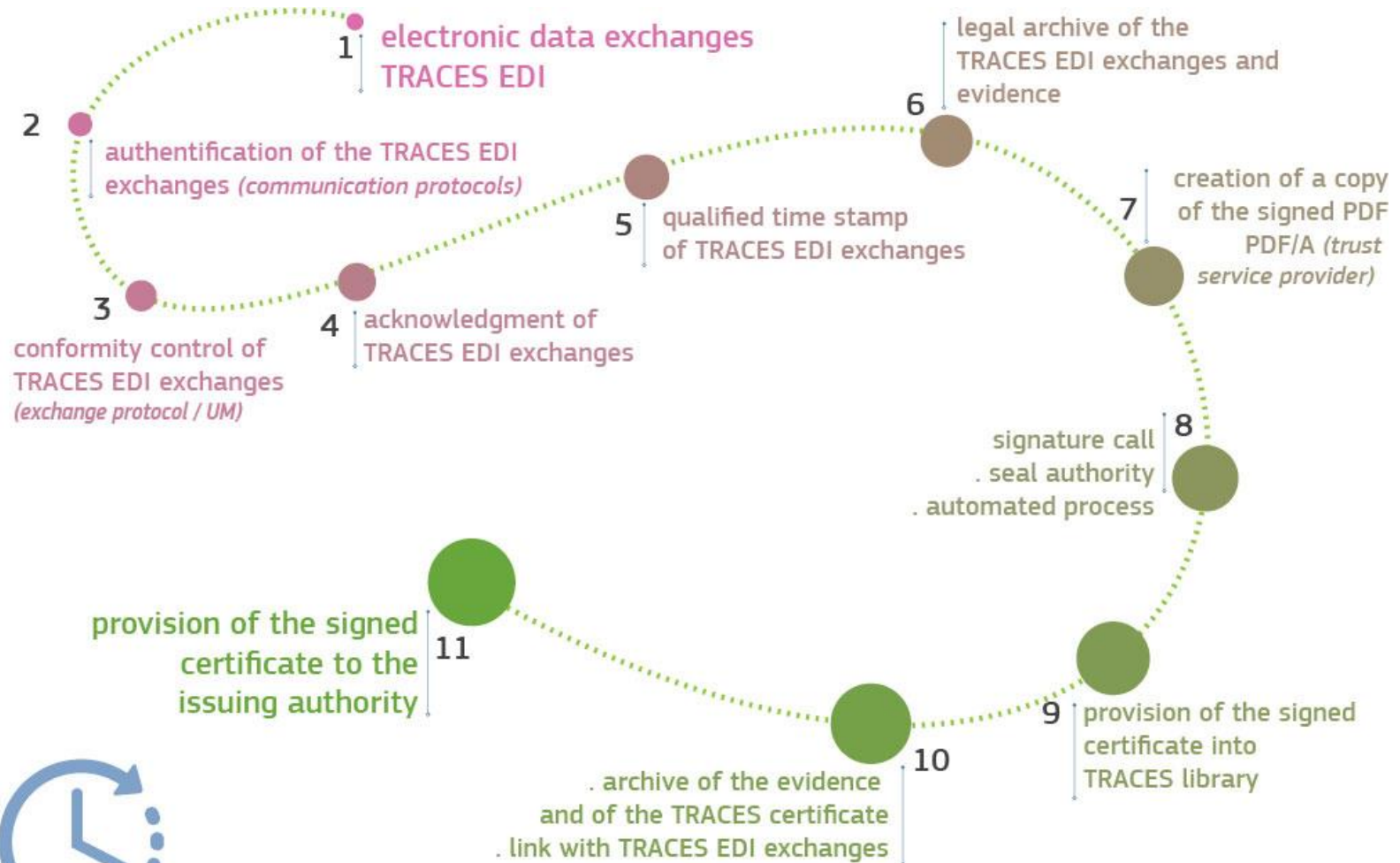
E-certification through TRACES

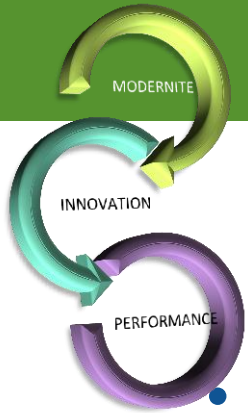




European
Commission

E-certification workflow between a system and TRACES





Digitisation and issues

- **Optimize** the management of the sanitary certificate
 - Simplification of the exchanges
 - Reliable information at every step
 - Reduction of the copies
- **Reduce** the delays of control
 - Pre-notification, Remplacement
- **Simplify and modernise** the relations between all the actors
- **Guarantee** security, traceability and legal value of the digital documents
 - Archive of sanitary certificates
- **Fight** against fraud
 - Electronic support more accurate than paper support

Implementation of the TRACES certificate: calendar

- **Integration** of electronic signature into TRACES: end 2016
- **Recognition** of the trust service provider: beginning 2017
- **Phytosanitary** IMPORT/EXPORT Certificate : beginning 2017

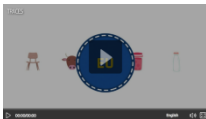
TRACES thanks you!



[Annual report](#)



WEB site - <http://ec.europa.eu/traces>



[Video](#) ([FR](#), [EN](#), [DE](#), [ES](#), [PT](#), [RU](#))



sante-traces@ec.europa.eu

Tel.: +32 2 297 63 50